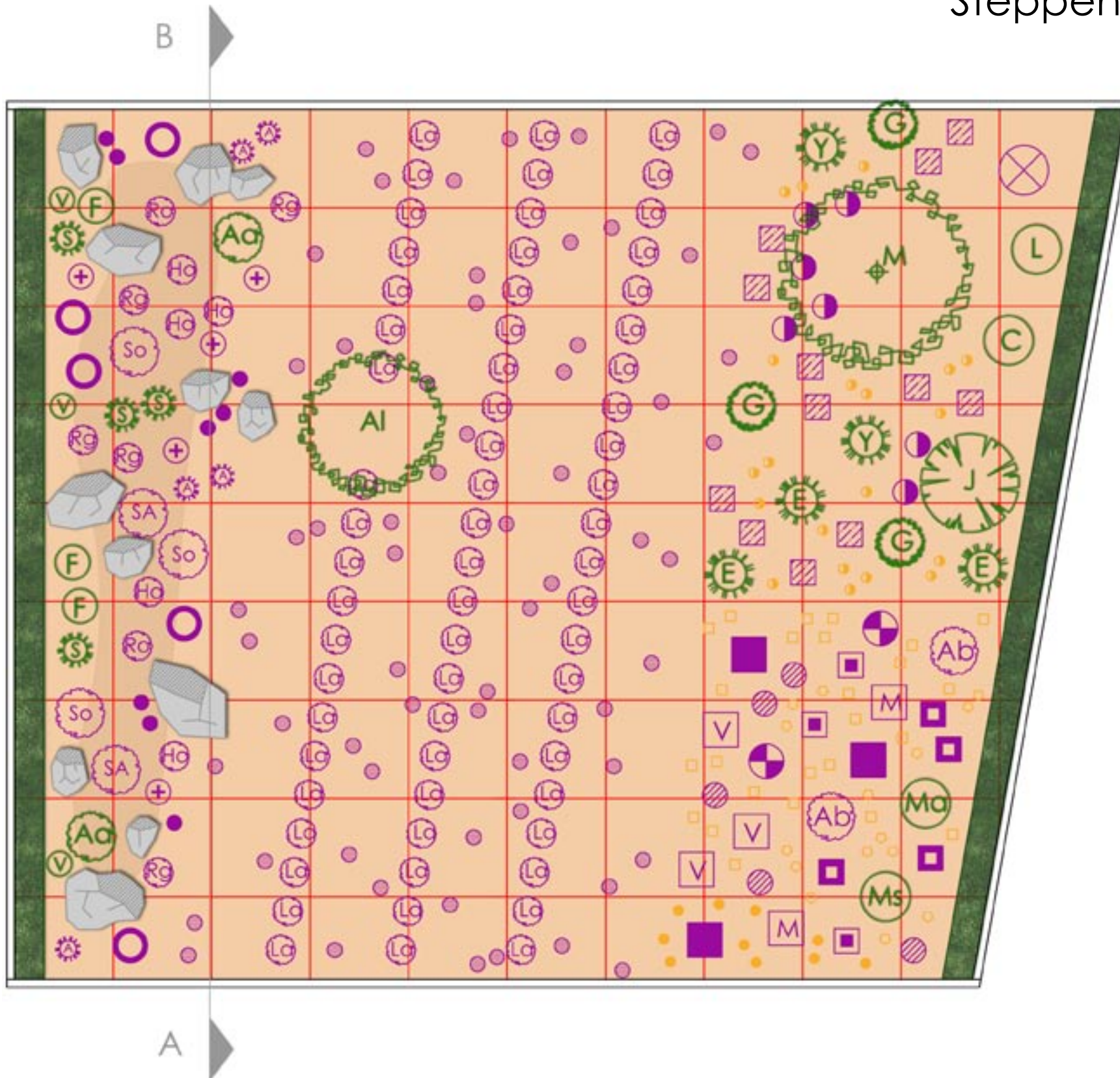
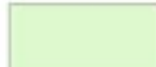







# Steppen- und Mediterrane Pflanzung 96 m<sup>2</sup>



-  Mediterrane Pflanzung
-  Lavendelfeld
-  Steppenbereich
-  Ruderalfläche

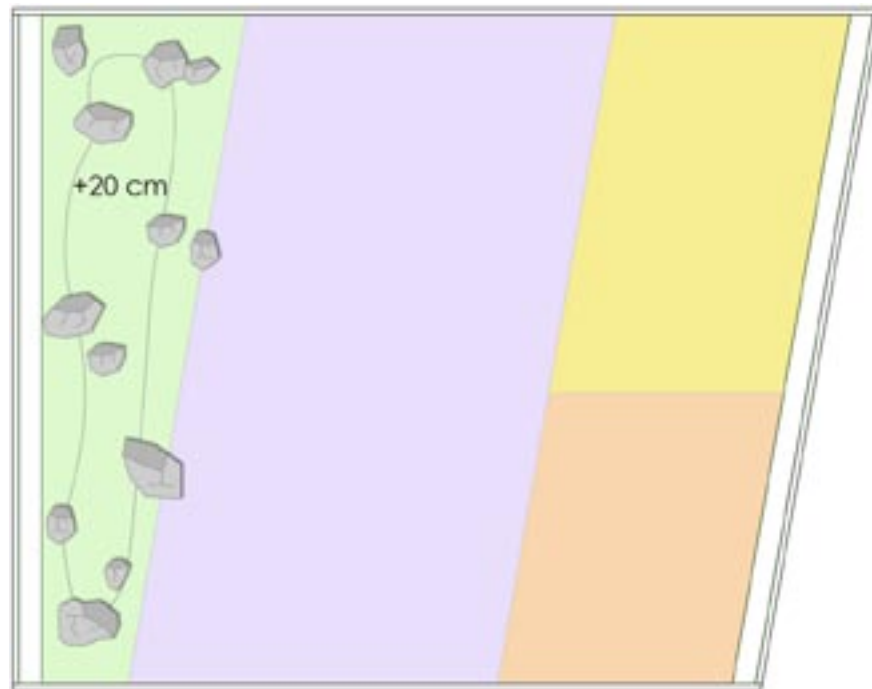
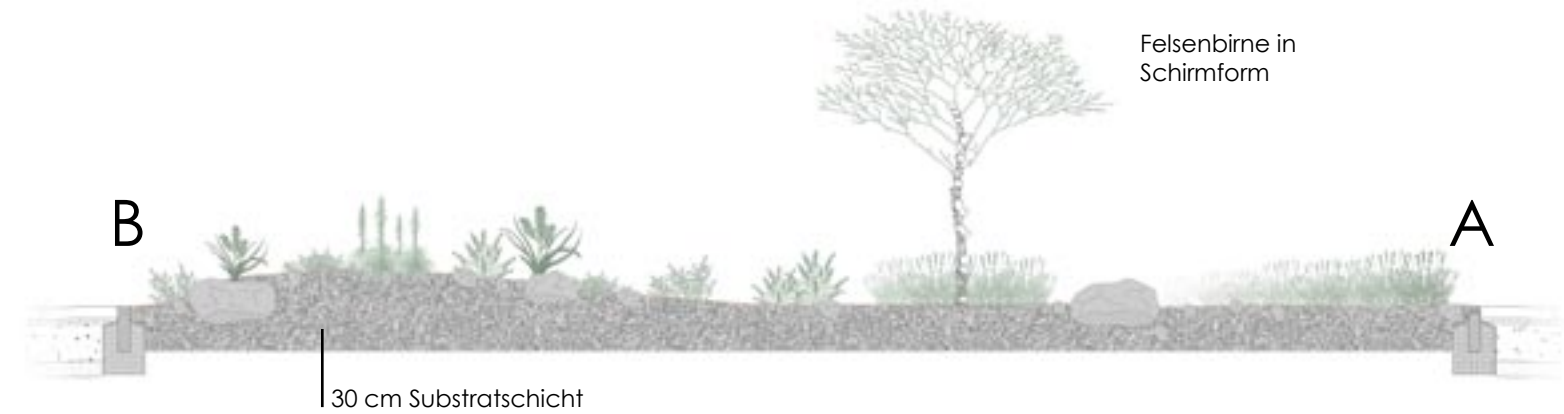


Maßstab 1 : 50



# Steppen- und Mediterrane Pflanzung

Schnitt Mediterrane Pflanzung, Maßstab 1:50



Habitate, Maßstab 1:100

## Legende

### Ruderalfläche - sonnig

Ma	1	Malva alcea
Ms	1	Malva sylvestris
Ab	2	Artemisia absinthium
□	4	Artemisia vulgaris
■	3	Echium vulgare
M	2	Malva moschata
○	5	Marrubium vulgare
⊕	2	Origanum majorana
⊖	3	Tanacetum parthenium
V	3	Verbena officinalis
●	15	Borago officinalis
●	25	Calendula officinalis
●	10	Capsella bursa-pastoris

### Steppe - sonnig

E	3	Eremurus spectabilis
G	3	Genista tinctoria
J	1	Juniperus communis 'Hibernica'
M	1	Mespilus germanica
Y	2	Yucca filamentosa

⊖	7	Dictamnus albus
□	12	Mertensia maritima
●	20	Anchusa officinalis

### - halbschattig bis schattig

C	1	Crambe tatarica
L	1	Levisticum officinale
⊗	1	Armoracia rusticana

### Mediterrane Fläche - sonnig

Al	1	Amelanchier lamarckii (Schirmform)
Aa	2	Artemisia abrotanum
F	3	Foeniculum vulgare 'Atropurpureum'
S	4	Silybum marianum
V	3	Verbascum thapsus

A	5	Asphodeline lutea
○	5	Asphodelus albus
Ho	4	Hyssopus officinalis
La	64	Lavandula angustifolia
Ro	2	Rosmarinus officinalis
Rg	6	Ruta graveolens
So	3	Salvia officinalis
SA	2	Salvia officinalis 'Alba'
+	5	Teucrium chamaedrys
○	62	Thymus serpyllum
●	8	Thymus vulgaris